



By Patrick McNally, Section Head,
Hawaii State Library - Hawaii & Pacific Section

Learn Your Family's History

Hawaii's public libraries subscribe to *Ancestry Library Edition*, an in-library version of the popular Ancestry.com Internet site. Thus, on most library computers, you can search for details about your family history.

On one of your public library's computers, click on "Other Databases," either on the tab at the top of the book catalog screen, or on the library's homepage (near the top of the left column). Choose "Ancestry Library" from the alphabetical list.

Before you search, a good place to start is at the "Charts and Forms" link at the top of the home screen. Here you can print out blank ancestral charts, a research calendar, family group sheets and other forms to help you organize and document your search results. Blank census forms display only the small-print column headings in clear, sharp focus – images of the original forms, with family data, often have "fuzzy" column headings that are difficult to read.

Now that you're ready to search, the easiest place to begin is back at the home screen. Notice that you're now in the "Historical Records" section of the database (one of three tabs above the search box). By entering a person's name and other information, if known, you will search all the historical record types at once (birth, death, marriage, census, etc.). Check the box labeled "Exact matches only" to limit your results at first. If you don't get useful records this way, uncheck the box and browse results that are close matches – name spellings in the indexes are sometimes only best approximations (e.g. Queen Liliuokalani is listed as "Liliakulard" in the 1900 census index).

U.S. Census records are often rewarding – every household is surveyed for occupants and their family relationships. Remember that Hawaii is included



Gathering around the new shelving unit are from left, **Lisa Komatsu-Liu**, Director of The Friends of Pearl City Library; **Floriana Cofman**, Pearl City Public Library Manager; **Lynn Masumoto**, Director, Public Libraries Branch; **Caroline Spencer**, Secretary, Friends of the Library of Hawaii; and **Gail Yamasaki**.

Pearl City Library Dedicates New Shelves; Celebrates Black History Month

Pearl City Public Library dedicated a new steel shelving unit for the Children's Room last month. Gail Yamasaki, daughter of the late author Max Templeman, the first President of The Friends of Pearl City Library, donated \$1,000 in honor of her father to this organization. A matching grant from the Friends of the Library of Hawaii and additional funding from the Friends of Pearl City Library assisted in the purchase of this beautiful shelving unit.

Following the dedication ceremony, fiber artist Betty Fines read aloud African-American children's literature, in celebration of Black History month. In addition, Fines shared two quilts, including one that was featured at her 2001 Black History month exhibit at the Queen Emma Gallery which portrays Harriet Tubman, a famous conductor of the Underground Railroad.



Fiber artist **Betty Fines**

beginning with the 1900 census. Of course, branches of your family may come from elsewhere. As you build your family tree, census and other records earlier than 1900 may provide needed information.

In general, on-screen displays and options guide you through your use of this database – scan each screen for types of information you can search for, and how. Screen tips are available, and often pay off with better (more successful) results. Patient and systematic effort often yields fascinating results!

In an upcoming issue of *Holo I Mua* (June 2007) we'll feature another family research database – one you can search from home!

Ancestry Library Edition is provided through Federal Library Services and Technology Act (LSTA) funding, which is administered by the Institute of Museum and Library Services (IMLS).

Next month: *Literature Resource Center*



Holo I Mua (*move forward, advance*) is published monthly by the Hawaii State Public Library System Library Development Services 680 Iwilei Rd., Suite 528 Honolulu, Hawaii 96817 Tel. 587-8397 / Fax 587-8396 Website: www.librarieshawaii.org

Jo Ann Schindler, *State Librarian*

Paul H. Mark, *Editor*

Board of Education:

For info. visit: www.boe.k12.hi.us

Karen Knudsen, *chairperson*

John R. Penebacker, *1st vice chairperson*

Herbert Watanabe, *2nd vice chairperson*

Dr. Eileen Clarke

Dr. Lei Ahu Isa

Mary J. Cochran

Kim Coco Iwamoto

Maggie Cox

Denise Matsumoto

Breene Harimoto

Garrett Toguchi

Cec Heftel

Darren Ibara, *student representative*

Donna Ikeda



Do You Use Our Online Databases?

State Librarian Jo Ann Schindler would like your assistance to learn more about usage and customer satisfaction with the Hawaii State Public Library System's online resources. All you have to do is fill out a brief survey available at your local library or visit the HSPLS Home Page: www.librarieshawaii.org. Under "Important Announcements," select the link for the 6-question survey, fill it out and click the "Submit" button. Survey results will be used to complete a report about the Federal grant which funded these online subscriptions. It should be fairly easy to complete and just take a few minutes. Mahalo for your kokua!

Mr. Monk Novel Features Kaneohe Librarian

"Mr. Monk and the Blue Flu" (Signet, Jan. 2007), the latest Mr. Monk mystery series novel by Lee Goldberg, features a Detective Cindy Chow who becomes a member of Mr. Monk's squad. She is a paranoid schizophrenic who wears a foil cap and claims to have been abducted and impregnated by aliens.

The real Cindy Chow, Kaneohe Public Library's Young Adult Librarian, coordinated a television scriptwriting workshop for the author last year at several Oahu libraries.

Mark Your Calendars

March 26 – Prince Kuhio Day Holiday; all libraries closed. Call your local library for holiday hours or visit www.libraries-hawaii.org.

Holo I Mua

Hawai'i State Public Library System

March 2007

See a Sense-Sational Show @ Your Library

By Paul H. Mark

The *Sense-Sational Show*, a new Honolulu Theatre for Youth stage production created especially for preschool-age children, is coming this spring to public libraries statewide for performances Mar. 14 – May 30. Admission is free.

Written by Cynthia See, Annie Wood, Rob Duval and Andrea Jenkins, *The Sense-Sational Show* is a fun, comedic adventure, complete with puppetry and music. In a world where objects come to life, anything can happen. Follow actors Duval and See as they smell, taste, touch, listen and see how to make sense of the senses.

Sponsored by the Friends of the Library of Hawaii, this 45-minute pre-literacy, pre-science program is recommended for children ages 2-4 and their families.



Call the hosting library two weeks in advance (three weeks in advance for Neighbor Island libraries) if a sign language interpreter or other special accommodation is needed.

The preliminary schedule for *The Sense-Sational Show* has been confirmed at the following public libraries:

Maui, Molokai, Lanai –
Mar. 14, 9:45 a.m. at **Lanai**
Mar. 29, 10 a.m. at **Molokai**
Apr. 24: **Makawao** at 10 a.m., **Wailuku** at 3 p.m.
Apr. 25: **Kahului** at 9:30 a.m. and

See *Sense-Sational Show*, page 3

HSPLS to Unveil Assistive Software Programs

In March, six public libraries will unveil two assistive software programs installed in the libraries' Internet stations for blind and visually-impaired customers:

JAWS for Windows is a screen reading program that assists low vision and blind users in browsing the web and accessing the library's catalog or online databases.

ZoomText will assist visually-impaired customers by magnifying documents up to 36 times their original size and will read them aloud using a voice synthesizer. Customers may use these in-library use software programs free of charge.

A news conference and demonstration of these assistive programs is scheduled at the Hawaii State Library this month, with a date and time to be announced.

The libraries launching these new software programs are: **Hawaii State Library, Pearl City Public Library, Kaneohe Public Library, Manoa Public Library, Waianae Public Library, and Molokai Public Library.**

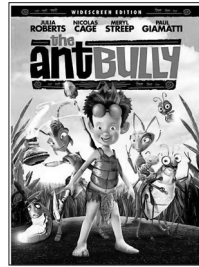
Software licenses were paid for with Federal Library Services and Technology Act funding which is administered by the Institute of Museum and Library Services. Staff training was provided with funds from the Bill and Melinda Gates Foundation's Staying Connected grant.

New DVDs @ YOUR LIBRARY

By Sally Walstrum, Librarian,
HSL – Art, Music, Recreation Section

THE ANT BULLY

When you're as small as an ant, the world is big – and adventure is bigger! That's what young Lucas learns in this animated film after he aims his water pistol at some hapless ants. They retaliate with a secret potion that shrinks him down to their size.



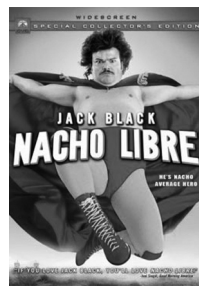
CAN YOU AFFORD TO RETIRE?

In this PBS special, the baby boomer generation is facing a retirement shock: long life expectancy, but short income. Most boomers will now be working well into their retirement years.



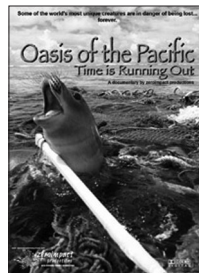
NACHO LIBRE

Jack Black stars as Ignacio 'Nacho,' a cook by day in a Mexican orphanage who moonlights as a lucha libre wrestler to raise money for the orphans.



OASIS OF THE PACIFIC: TIME IS RUNNING OUT

One of the world's most unique ecosystems is in danger of being lost forever. "Oasis of the Pacific" is a 58-minute documentary that takes viewers on a revealing journey through



the stunning, yet endangered undersea world of the Hawaiian Islands.

POPULAR MECHANICS FOR KIDS: FIRE-FIGHTERS AND OTHER LIFE –SAVING HEROES

This video program explores the world of life saving rescues. The hosts go along side-by-side with firefighters trying to contain a blaze; learn how a SWAT team handles a hostage situation; and trains with the LAPD.



UNFINISHED BUSINESS: THE JAPANESE-AMERICAN INTERNMENT CASES

In the spring of 1942, more than 110,000 American citizens of Japanese ancestry were uprooted from their lives and incarcerated in relocation camps. Their stories, along with those who refused to go, are told in this Oscar-nominated documentary film.



Tax Season Reminders

✓ **Support Public Libraries:** Tax-payers can designate \$2 of their refund (\$4 for a joint return) for the Hawaii State Public Library System by contributing to the Hawaii State Public Library System Special Fund. Place a check mark in the check-off box on your State individual income tax return form. Your tax donation will benefit communities statewide through the purchase of library materials for all ages. Mahalo nui loa for supporting Hawaii's Public Libraries!

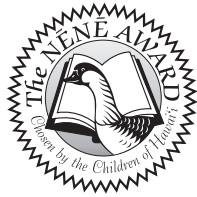
✓ **State Tax Forms:** Pick up State tax forms at your local public library, courtesy of a continuing partnership between the Hawaii State Public Library System and State Dept. of Taxation. Library staff will supply forms, but are not trained to assist with tax questions.

✓ **State Tax Questions:** Call Dept. of Taxation: on Oahu, 587-4242; from Neighbor Islands, 1-800-222-3229 (toll-free); for hearing impaired: on Oahu, 587-1418; from Neighbor Islands, 1-800-887-8974 (toll-free). For more information, visit: www.state.hi.us/tax.

✓ **Federal Tax Forms:** See last month's *Holo I Mua* (2/07) for a listing of 34 public libraries serving as distribution outlets or visit www.librarieshawaii.org. In the Navigation column, under "About HSPLS," select "Holo I Mua" and click on "February 2007." See "Need Tax Forms, Anyone?" on pages 1 – 2. For Federal tax information or to print/download forms visit: www.irs.ustreas.gov/formspubs/index.html.

Kids, Vote for the Nene Award

Do you want to help select this year's Nene Award-winning book – the favorite book of the children of Hawaii?



Students in grades 4 through 6 are eligible to vote at participating school or public libraries through Mar. 16, 2007. You may only vote once.

Go to the Nene Award website, <http://nene.k12.hi.us/index.html> to learn more about this award, find out what books are eligible, and what books are on this year's recommended reading list.

In addition, March 16th is the deadline to submit entries to one of the four categories of Nene Award contests: essay, poster, performance, and digital arts. These contests are all centered around last year's Nene Award winner *Eragon* by Christopher Paolini. See the website for more details. Submit entries to any public library.

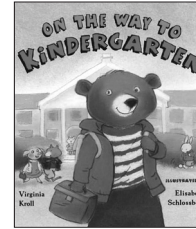
Contest winners will be invited to share their work at an awards ceremony in May 2007, when the new Nene Award-winning book will be announced. When details about the awards ceremony are finalized, they will be made available at the Nene website.

Recommended Children's Books

By Children's Librarians of Hawaii State Library
–Edna Allyn Room

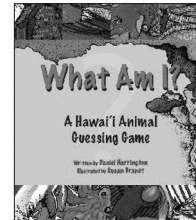
Virginia Kroll ON THE WAY TO KINDERGARTEN

(Preschool – K) Follows the milestones that a little bear cub has achieved during his first five years, leading up to the exciting day he is ready to start Kindergarten.



Daniel Harrington WHAT AM I? A HAWAII ANIMAL GUESSING GAME

(Preschool - up) Young readers will enjoy figuring out the answers to riddles about animals that live in Hawaii. Colorful artwork will make them want to play this fun guessing game again with friends.



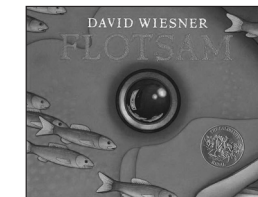
Margaret Read McDonald CONEJITO: A FOLKTALE FROM PANAMA

(K – Grade 3) A little rabbit and his Tia Monica outwit a fox, tiger, and lion, all of whom want to eat him for lunch. This easy-to-learn tale makes a great read-aloud that easily invites participation and introduces Spanish words.



David Wiesner FLOTSAM

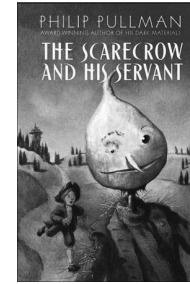
(K – Grade 4) While exploring at the beach, a curious boy finds an old-fashioned underwater camera that has washed ashore. After developing the film, the boy is surprised to see amazing photographs of hidden underwater



worlds. This wordless picture book won the 2007 Caldecott Medal for the best American picture book of the year.

Philip Pullman THE SCARECROW AND HIS SERVANT

(Gr. 4 – 6) A hapless scarecrow on a quest to find and save his home takes on orphaned Jack as his servant. Together, they contend with "danger . . . followed by glory . . . leading to sorrow," as a fortune-teller foretold. A 2007 Nene Award Recommended Book.



Graham Salisbury HOUSE OF THE RED FISH

(Gr. 5 – 9) In this sequel to the award-winning *Under the Blood-Red Sun* (1994), 14-year-old Tomi is determined to raise his father's fishing boat which was sunk after the attack on Pearl Harbor. His friends and grouchy grandfather help in this rescue effort that symbolizes hope and courage during a difficult time of racial tension in Hawaii during World War II.



Sense-Sational Show, from front page

Lahaina at 2 p.m.
Apr. 26, 3:30 p.m. at Kihei

Oahu –
Mar. 20, 10:30 a.m. at Hawaii Kai
Mar. 25, 2:30 p.m. at Kaneohe
Mar. 28: Ewa Beach at 10:30 a.m., Mililani at 6:30 p.m.
Mar. 30, 10 a.m. at Kahuku
Apr. 4, 6:30 p.m. at Waimanalo
Apr. 7, 10:30 a.m. at Hawaii State Library – Edna Allyn Room
Apr. 17, 6:30 p.m. at Aina Haina
Apr. 18, 5:30 p.m. at Waipahu
Apr. 27, 10 a.m. at Waiialua
Apr. 29, 2 p.m. at Pearl City
May 3, 5 p.m. at Waikiki-Kapahulu
May 5, 10 a.m. at Waianae
May 8, 1 p.m. at Aiea

May 13, 10 a.m. at Kaimuki
May 23, 10:30 a.m. at Liliha
May 25, 10:30 a.m. at Salt Lake–Moanalua
May 29, 10:30 a.m. at Kalihi–Palama
May 30, 10:30 a.m. at Wahiawa

Kauai –
Mar. 21: Hanapepe at 9 a.m., Waimea at 2 p.m.
Mar. 22: Princeville at 10:30 a.m., Kapaa at 2:30 p.m.
Mar. 23: Lihue at 9:30 a.m., Koloa at noon

Big Island –
Apr. 9, 1 p.m. at Laupahoehoe
Apr. 10, 3 p.m. at Hilo
Apr. 11, 9:15 a.m. at Honokaa
Apr. 12: Kailua-Kona at 9:30 a.m., Holualoa at 2 p.m.
Apr. 13, 3 p.m. at Kealahou
May 14: Thelma Parker at 10 a.m., Bond Memorial at 6:30 p.m.
May 15, 6 p.m. at Keaau
May 16: Mt. View at 9:30 a.m., Pahoa at 1:30 p.m.
May 17: Pahala at 9:30 a.m., Naalehu at 1:30 p.m.

For a complete listing of the program schedule visit the HSPLS website: www.librarieshawaii.org. Program schedule is subject to change.

For more information, contact the hosting library.

LIBRARY TOONS!

By Wayne Kaneshiro, LBPH

