

BOARD OF EDUCATION GENERAL BUSINESS MEETING
November 4, 2010
State Librarian's Report

1. North Kohala Public Library Grand Opening, November 8, 2010

The brand new North Kohala Public Library will celebrate its grand opening on Monday, November 8 at 11 am. The library is located on a 3.8 acre parcel of land on Akoni Pule Highway near the Kohala Elementary and High School and the community's main shopping area. The 6,000 square foot library incorporates environmentally friendly features that we anticipate will earn LEED (Leadership in Energy and Environmental Design) Silver Certification. In addition, the North Kohala Public Library will hold 35,000 materials, or double the collection of the Bond Memorial Public Library. Three reading bays feature large windows that overlook Kohala's spectacular natural landscape, and a spacious circulation desk area and workroom will maximize comfort, efficiency, and workflow. There will be twice as many public computers, offering Internet access, online database searching, word processing and other programs. A meeting room is available for library programs and community use. Board Members are encouraged to join us as we open a brand new building for the first time in more than six years.



2. HSPLS Recruitment Has Begun

The Governor has granted HSPLS' Request for Exemption to begin recruitment and filling public service positions. Recruitment information is as follows:

- Library Assistant III
Opening Date: Friday – October 29, 2010
Closing Date: Monday – November 15, 2010
- Library Assistant IV
Opening Date: Friday – October 29, 2010
Closing Date: Continuous recruitment until needs are met
- Library Technician V; Librarian III, IV, V
Opening Date: Saturday – November 13, 2010
Closing Date: Continuous recruitment until needs are met

Interested individuals may be directed to the State job information website <http://www.hawaii.gov/hrd/main/esd/>.

3. Kapolei Public Library Fright Night

Each year, Kapolei's annual Halloween Program increases in size and popularity, and this year's turnout was nothing short of amazing as 1,492 participants joined the Oct. 20 festivities. Costume contest judges for the multiple categories included Senator Mike Gabbard; Representative Sharon Har; Malia Schwartz, representing the Friends of the Library, Kapolei; Diane Eddy, Hawaii State Public Library Director; and Ann Fujioka, HSPLS Technical Services Section Head. Lee Tokuhara and D.R. Horton funded the entire Halloween program with their donation of \$1,000.



4. Lihue Public Library Programs and Services

Lihue Public Library Manager Caroline Larson is here this afternoon to provide an update on programs and services at Lihue Public Library.

BOARD OF EDUCATION GENERAL BUSINESS MEETING
November 4, 2010

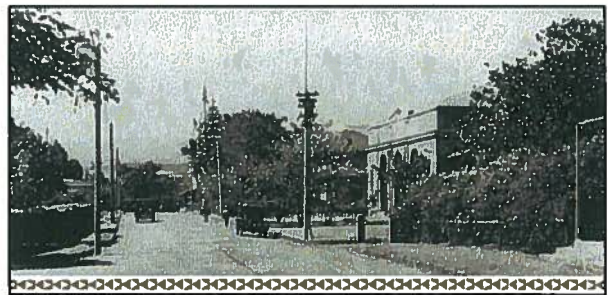
Report on Programs and Services at
Lihue Public Library

by Lihue Library Branch Manager, Carolyn Larson

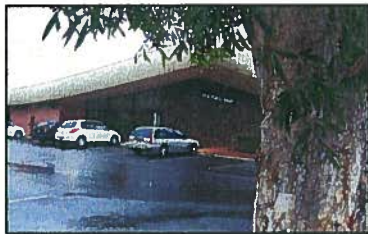
Mahalo nui.

On behalf of the residents and visitors who use Lihue Library and all the public libraries in the state I extend my sincere appreciation for your service on the Board of Education.

Lihue Library has a history. In the year 1899 there was no publicly accessible library on Kauai, but there was a vision. In 1900 Rev. John Mortimer Lydgate moved his personal library into the Sunday School Rooms at his church and opened the Kauai Lending Library. After 20 years the library had outgrown its space. So in 1923 Mrs. Samuel Wilcox built a new building



for the Lihue Library right in the heart of Lihue. After statehood in 1959, financial support for public libraries was shifted to the State of Hawaii. And in 1969 the State built a new building, the current library building for Lihue Library. Again the collections and staff moved, from the old building, now housing Kauai Museum, to the new building on Hardy Street. The beautiful and unique building has had more than one renovation and is scheduled for another. When this year's renovation project is complete we hope to re-open celebrating Lihue Library's 111th anniversary!



Lihue Library is conveniently located in the heart of Lihue across the street from Wilcox Elementary School and in the neighborhood of state and county administrative centers and other public and professional services.

Lihue Library serves as a regional library in many ways, even though the library is no longer named, administered, or funded as a regional library. Lihue's centrally located library serves as a home base for several unique library services for the island.



Lihue Library hosts the Kauai Electronic Systems Support Services, the IT services baseyard, the IT guy's storage and workshop, and an (under-used) computer lab.

Lihue Library houses the Kauai Island delivery van and driver and serves as the inter-library loan hub for Kauai.

As the island's designated **Government Documents Repository**, Lihue Library manages a sizeable collection of Federal, State and Local documents for public access and assists the public in locating materials online as well as on the shelves.



The Kauai Branch of the Library for the Blind and Physically Handicapped is administered out of Lihue Library.

The collections at Lihue Library, which are larger than those of other Kauai libraries, serve as a valuable **ILL Resource** for all island libraries. And the **Expanded Reference** collection includes materials not available elsewhere on the island.



The public meeting room at Lihue Library is very busy all year long as there is a dearth of meeting space available in Lihue for small and medium sized groups.

Lihue Library provides **3** public access catalog computers, **8** internet access computers and **1** government documents access computer for library users. These machines, serviced by one printer, are also very busy.



Lihue Library programs enrich the lives of citizens:

For Children:

- Summer Reading Program.
- Orientation / library cards for second grade (about 7 classes) from Wilcox Elementary School.
- After school elementary kids.



For Teens:

- Teen Advisory Board
- Summer Reading
- Cinema Anime

Teen programs at Lihue Library are on hold until we fill the YA Librarian position

For Adults or Families:

- The Lihue Library Adult Book Club.
- The Lihue Library Film Club.
- Annual Garden Island Poetry Contest in April.
- Weekly Book Buzz column in both the online and the print edition of The Garden Island.
- Lihue Library's Reach Seniors Initiative.
- Adult Summer Reading Program.
- FOLOH and Outreach College entertainment and education programs for all ages.



The Friends of Lihue Public Library group is now holding three used book sale fundraising events annually, in the spring, the summer and the fall.

Administrative improvements include:

- Training and orientation program for new staff.
- Rules and procedures for security guards.
- Tips and practices for managing unruly children.
- Annual self-evaluation to set priorities.
- Disaster and emergency prevention, preparedness, response and recovery plan first draft.



Lihue Library's recycling program handles cardboard, newspapers, miscellaneous paper, including paperback books, cans, bottles, and printer cartridges.



ADA and other improvements project is upcoming. We look forward to a more efficient, comfortable, safe and good looking library.