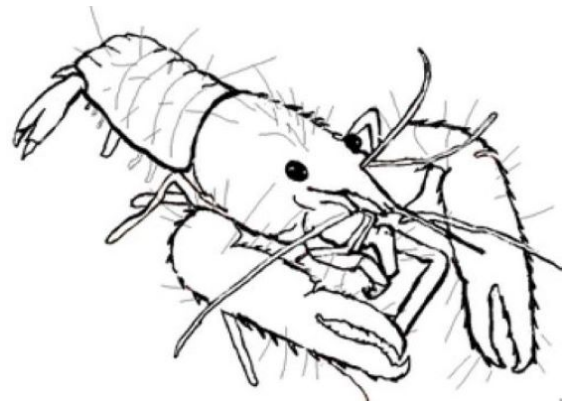




Red Hawaiian Reef Lobster ('Ula)

Fun Tail Facts:

- The tail of a female lobster is wider than the tail of a male lobster.
- A lobster can swim backwards by curling and uncurling their tail.
- A female lobster can hold thousands of eggs underneath her body, attached to the swimmerets under her tail.



Created through cooperation with:



NOAA
FISHERIES

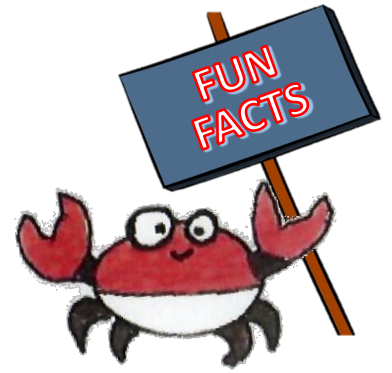


PAPAHĀNAUMOKUĀKEA
Marine National Monument

Table of Contents

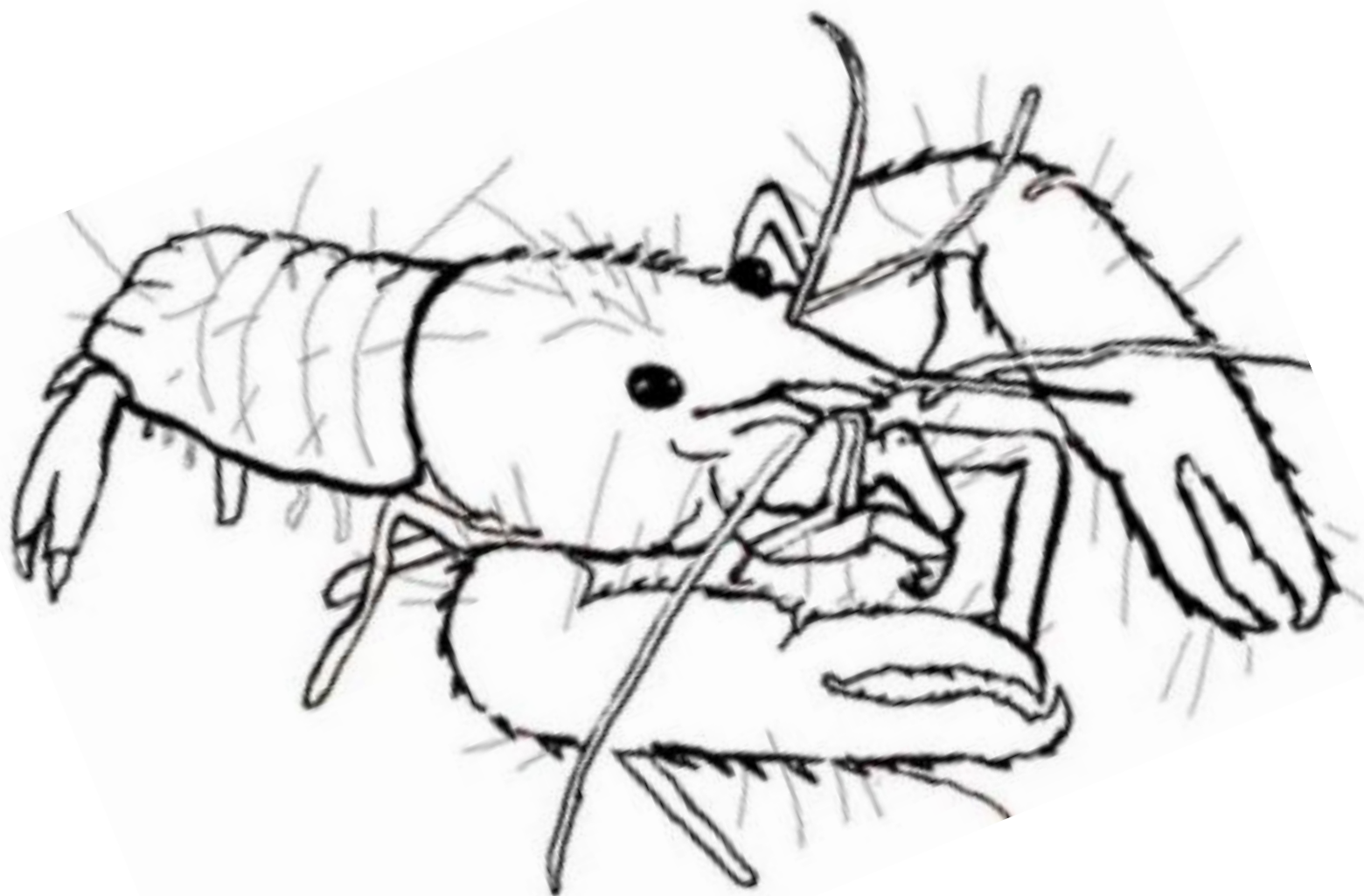
- Fun Facts
- Coloring Page
- Craft Project
- Crossword Puzzles
- Video Links
 - PBS Kids: Wild Kratts: Swimming with the Lobster:
<https://www.youtube.com/watch?v=pl-d9AUHEg8>

LOBSTERS



- All lobsters are crustaceans. This is the same group of marine life that includes shrimp, crabs, and even barnacles!
- Lobsters are nocturnal, meaning that they are active only at night.
- The Hawaiian spiny lobster uses sound to warn other lobsters (and humans too!) to move away from their home.
- Lobsters don't have bones but instead have hard external skeletons, called exoskeletons.
- Some species of reef lobster can live at 1,000 feet under the ocean's surface!
- The red Hawaiian reef lobster has hairs all over its body that can sense changes in the surrounding water to alert it if a predator is nearby.
- The Hawaiian Islands do not have "true" lobsters which have very large pincer claws at the end of their first pair of legs. The Hawaiian spiny lobster doesn't have any claws at all!
- Spiny lobsters use forward-pointing sharp pointy spines on their antennae and upper body surface as a defense from predators.
- Some female lobsters can lay half a million eggs at one time!
- Lobsters can pee out of special tubes found right under their eyes and use it for fighting or mating with other lobsters.

Red Hawaiian Reef Lobster Coloring Sheet

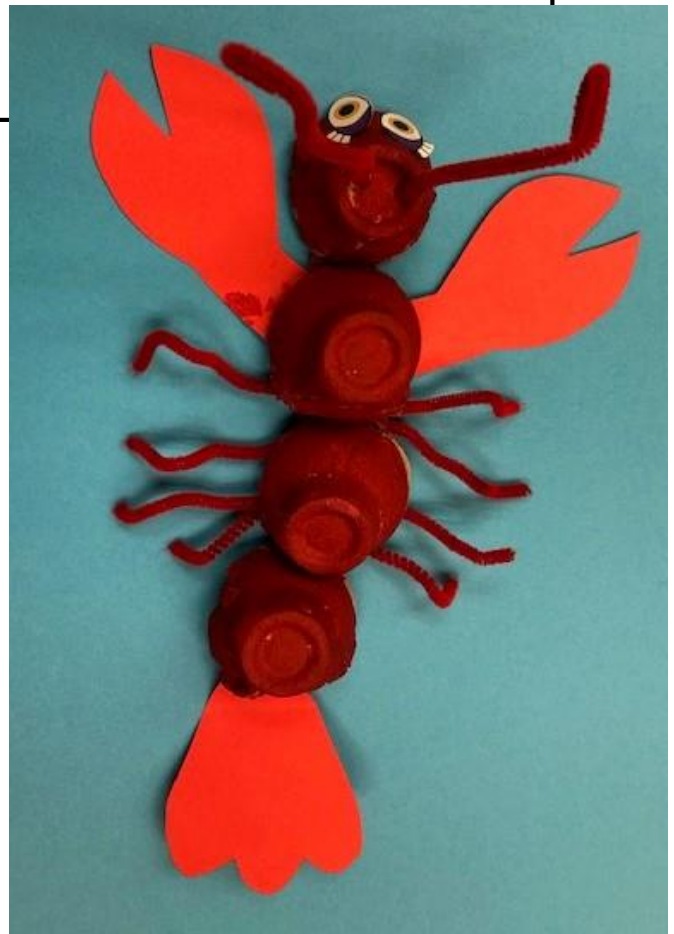
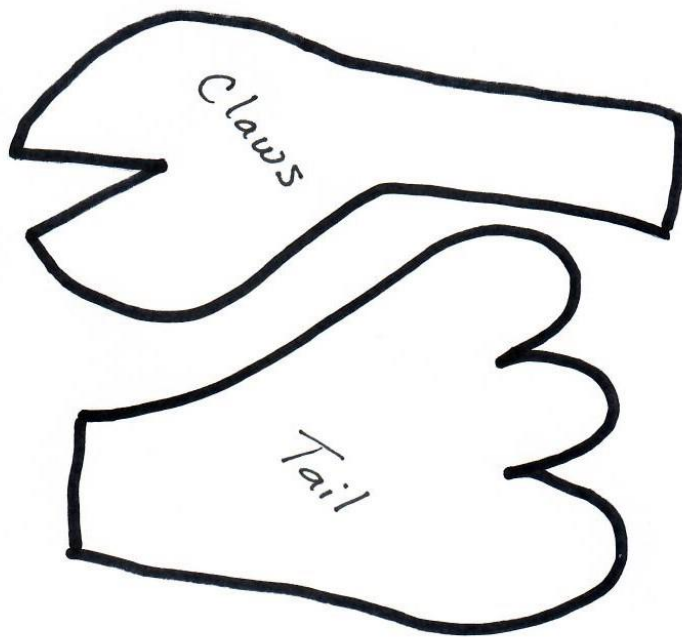


CRAFT PROJECT

Let's Make Lobsters

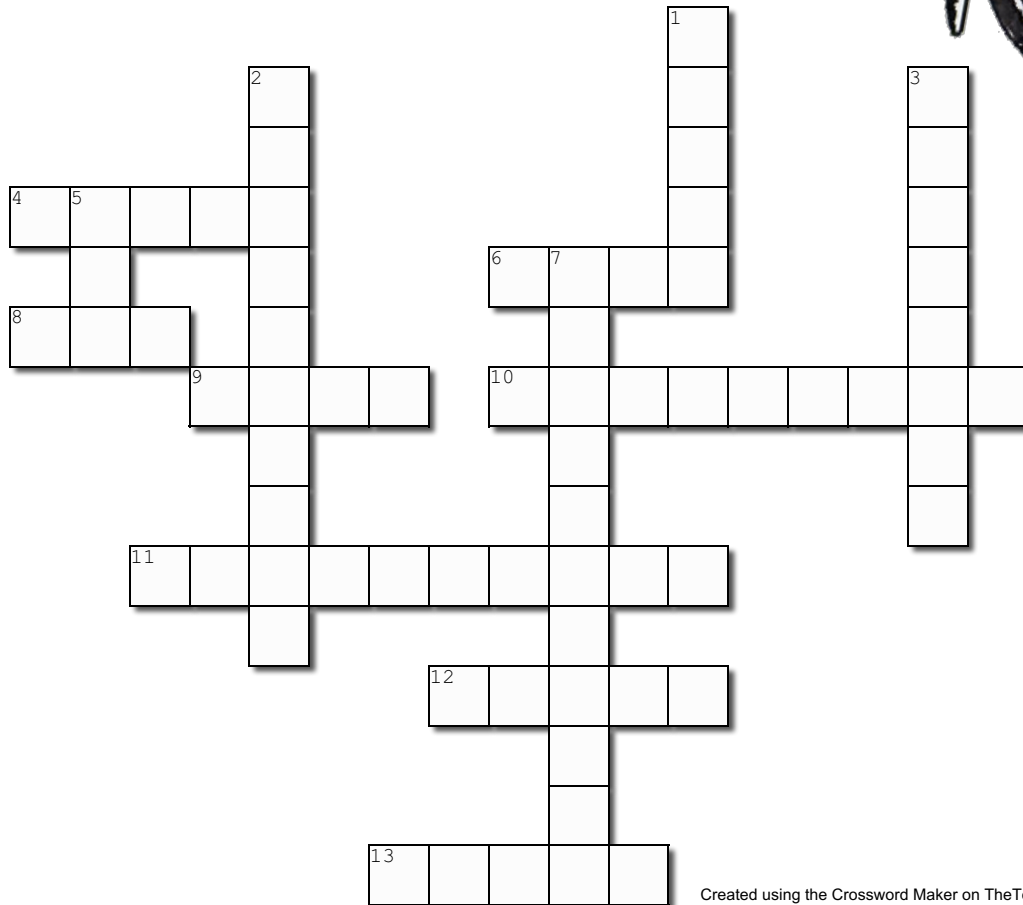
Did you know that crabs walk sideways and lobsters walk straight? This lobster is made from parts of an egg carton, pipe cleaners and with construction paper claws and a tail.

- Cut out 4 sections of the egg carton and glue or tape them together.
- Paint or color your lobster egg carton body.
- Add 8 legs, 2 antennas and eyes.
- Make paper claws and a tail.



Lobster

**CROSSWORD
PUZZLE!**



Created using the Crossword Maker on TheTeachersCorner.net

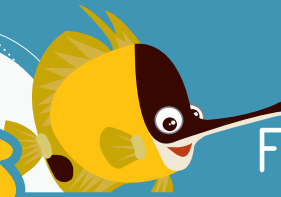
Across

4. A lobster does not have this usually important organ!
6. Lobsters can taste food in the ocean water with these.
8. The number of legs found on a lobster.
9. What it's called when a lobster sheds its shell so it can grow bigger!
10. Lobsters are _____, meaning they are active at night.
11. A lobster isn't a fish, it is a _____.
12. Where you will find lobsters.
13. This Hawaiian species of lobster doesn't have pincer claws.

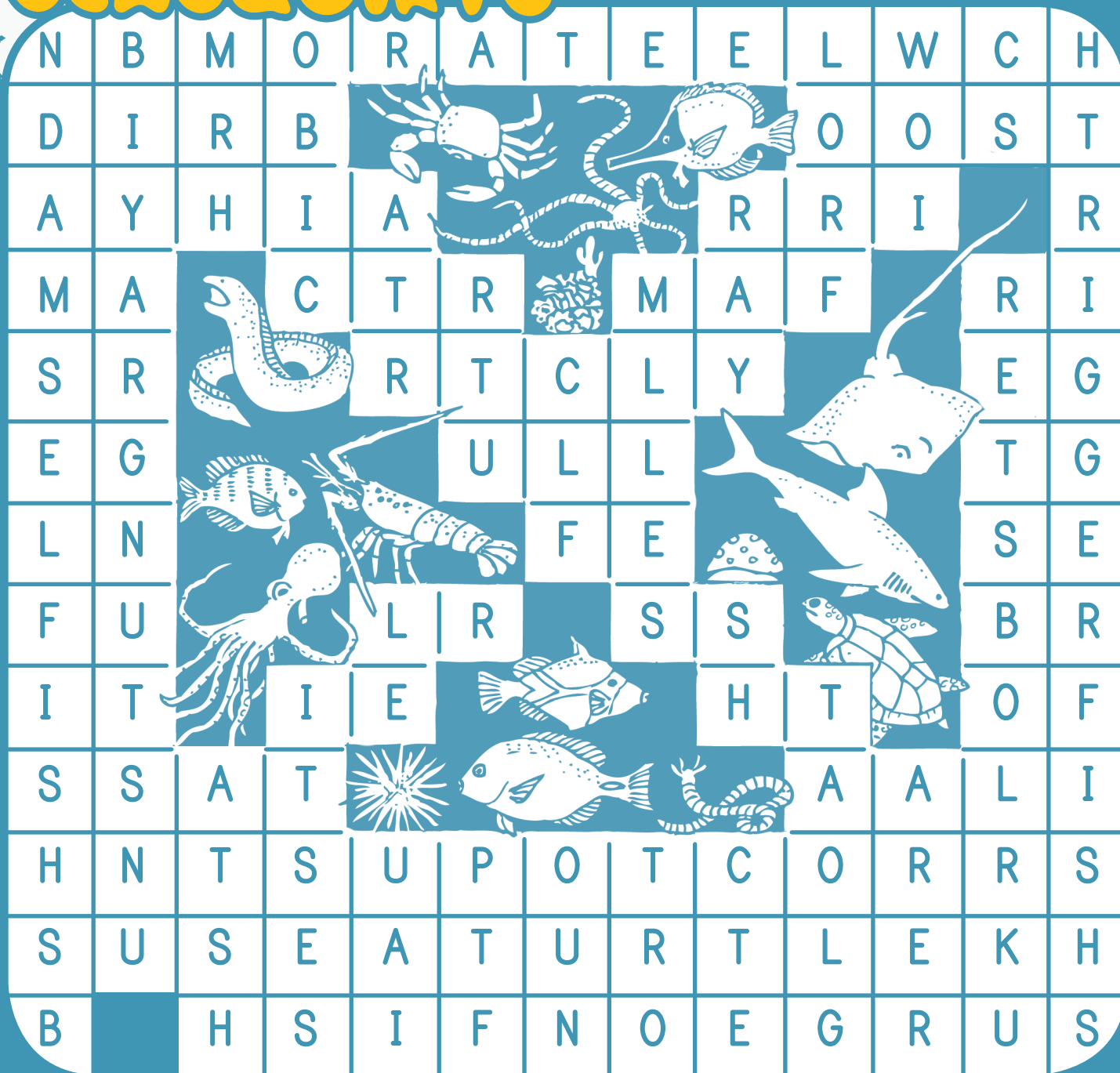
Down

1. Like fish, lobsters use these to breathe.
2. Lobsters are _____, meaning they can eat plants or animals.
3. Lobsters can swim _____!
5. Just like fish, lobster eggs are called _____.
7. Another name for the hard external skeleton of a lobster.

SEASQUIRTS



FIND THE WORDS!



GOOD REEF VISITOR WORD FIND

THE REEF PROVIDES LIVING SPACE FOR MARINE LIFE OF ALL KINDS

BRITTLE STAR

BUTTERFLYFISH

CORAL

CRAB

DAMSELFISH

LOBSTER

MORAY EEL

OCTOPUS

SEA TURTLE

SHARK

SNAIL

STING RAY

SURGEONFISH

TRIGGERFISH

URCHIN

WORM

Artwork by A. Tsukamoto



WAIKIKI
AQUARIUM

UNIVERSITY OF HAWAII

